

# CAPTURE | JAY

**CapturejayHX v.2.5.0**  
**User's manual**

# Index

<b>About CapturejayHX</b> .....	<b>3</b>
<b>Quickstart: CapturejayHX initial setup</b> .....	<b>5</b>
<b>The user interface</b> .....	<b>6</b>
<b>Chapter 1: The recording module</b> .....	<b>7</b>
The main window.....	7
The setup window.....	12
The setup window - Video device settings.....	13
The setup window - Audio device settings.....	14
The setup window - Codec settings.....	15
The setup window - Recording profiles.....	17
The setup window - Recording options.....	18
The setup window - Timestamp overlay .....	21
The setup window - Logo overlay .....	21
The setup window - Misc settings.....	23
The setup window - Keyboard shortcuts.....	23
The setup window - Password section.....	24
The setup window - Video switcher settings.....	24
The setup window - Scheduling section .....	26
<b>Chapter 2: The player module</b> .....	<b>32</b>
<b>Appendix:</b> .....	<b>41</b>
Additional settings .....	41
End user licence agreement.....	42

# About CapturejayHX

Originally conceived as high-performance real-time video ingest software, CapturejayHX has been improved into a comprehensive application which now includes multiple features in a unique software package:

- Realtime video ingest software
- No-stop long-time logger to provide your local Authority with copies of sections of your broadcast on request.
- 100% customizable recorder with full trigger support, for automatic recording of satellite news feeds.

Key features:

- Multichannel structure: up to 8 independent recording channels on the same video server.
- Multiformat capture engine supports realtime encoding of ingested video in a wide choice of audio/video formats, saving time compared to offline transcoding.
- Broadcast-grade integrated codecs support for H.264/AVC, H.265/HEVC, MPEG-2, M-JPEG, MPEG-4, DV, DVCPRO HD, ProRes 422, P2, VC-3 (aka DNxHD), JPEG2000, VP8, PCM, MP3, AAC
- File formats:  
MXF (including AVC-Intra 50 and 100), GXF, MP4, MOV (including AVC-Intra 50 and 100), XDCAM – MPEG IMX, MKV, AVI, WebM, MPEG-2 (PS and TS)
- Recording settings are freely user-defined depending on available Hard Disk space and required quality.
- Supports full range of BlackMagic, Bluefish444, Deltacast, Stream Labs, Dektec, or any WDM capture card.
- Automatically indexes recorded video by date and time
- Full customizable timestamp superimpose on logged video, both on the recording than on-the-fly while playing the logged video.
- Dedicated player module allows to play logged video from LAN, while recorder module simultaneously carries on recording.
- Scheduling features allow to manage recording according to your schedule or by means of external triggering.
- Internet Time synchronizer: keeps your system clock always updated via your internet connection.
- Multiple frame capture feature allows capturing JPG frame-shots to disk while recording or while playing previous recordings.
- Built-in file purge feature removes older recordings to make space for the new ones.
- Allows choosing recording quality depending on your needs and available hard disk space independently for each of the 8 channels: audio and video codecs, frame per second, audio sampling frequency, image size, etc.
- Protects access to software settings with supervisor password.
- Multilanguage software.

CapturejayHX has been carefully engineered on building blocks, so you may purchase just the needed channels and features and save money on your initial purchase; for example, you may initially purchase just 1 channel, and later upgrade to 2, 4 or 8 channels if needed. Likewise, you may add later various optional plug-ins, such as HD or the "Pro Pack" which includes a bunch of handy features like recording scheduling, Internet Time Synchronizer, password protected setup, and more.

Thanks to its powerful scheduling features, CapturejayHX allows to automatically start and stop recording according to a preset schedule for each day of the week or by means of external triggering from a satellite receiver: this way, tasks like capturing satellite news feeds or activating recording just when needed are easily performed, saving valuable hard disk space.

It is possible to play the recorded video instantly on any workstation in your LAN: more than one copy of the player module can access to the same recordings across a local network, while recorder module simultaneously carries on recording. You don't need to stop recording if you wish to watch any previously recorded passage!

When used as a compliance logging system, CapturejayHX fully takes advantage from today's PCs digital technology to store massive amounts of audio and video with fast access and retrieving features. You can finally get rid of those old time-lapse video recorders of questionable quality and reliability, and with high maintenance costs (you have to periodically check machines, other than purchasing and periodically replace tapes).

CapturejayHX automatically stores and indexes recorded video by date and time, and can be set to automatically rotate logged files to keep track of a desired number of days (according to your local regulations) and if you wish, can automatically erase older days to make room for the new ones.

CapturejayHX offers an instant access to recorded video thanks to its exclusive indexing and locating system. Gone are the days of rewinding through miles of tapes for hours (or days) to locate the desired passage! With CapturejayHX you just select desired date and time, and press play to watch the exact passage.

## Quickstart

Here is a short summary of basic operations for speeding up CapturejayHX initial setup. For further details we strongly suggest you to carefully read the user's manual!

**Installing your customized USB dongle:** Insert the USB dongle in one of the available USB ports. If Windows is running, the dongle is recognized and installed automatically following a search on Windows Update.

### Installing CapturejayHX

1. Insert the installation CD in your CD-ROM drive.
2. Double click on the setup.exe file in the "capturejayHX" folder to start setup.
3. Follow the on-screen guided instructions which will guide you for the rest of the setup procedure.
4. Copy the wjlogo.bmp file from the main folder of your installation CD to CapturejayHX installation folder (usually c:\program files\capturejayHX if you choose the default one). This file is your station logo which is needed for software customization.
5. Click "Start", "CapturejayHX", "CapturejayHX" to start the application, then click on "Setup" button and proceed to perform initial system setup and configuring your video capture and playout settings, etc.
6. Confirm changes and restart the application to validate the new settings.

Once you're done with setup and initial testing, we strongly suggest you to fine tune your system setup for best performance:

- Disable screen savers and power saving modes: from the Windows desktop, click the mouse right button, select "properties", click on "screen saver" tab, and from the drop-down menu select "none". In the "Screen power saving setup" section, click on "setting" and from the drop down menus "turn down monitor" and "disable hard disks" select "Never".

## The user interface

Graphic layout of CapturejayHX is based on “skins”: these are packages of graphics components which are used to customize software appearance, from dialog windows to buttons, menus, labels, etc. Thanks to skins, the user interface can be made good looking according to your own taste. CapturejayHX includes a folder with several “skins”: click on this button and browse your skin folder to select your favourite one. Some examples of skins:

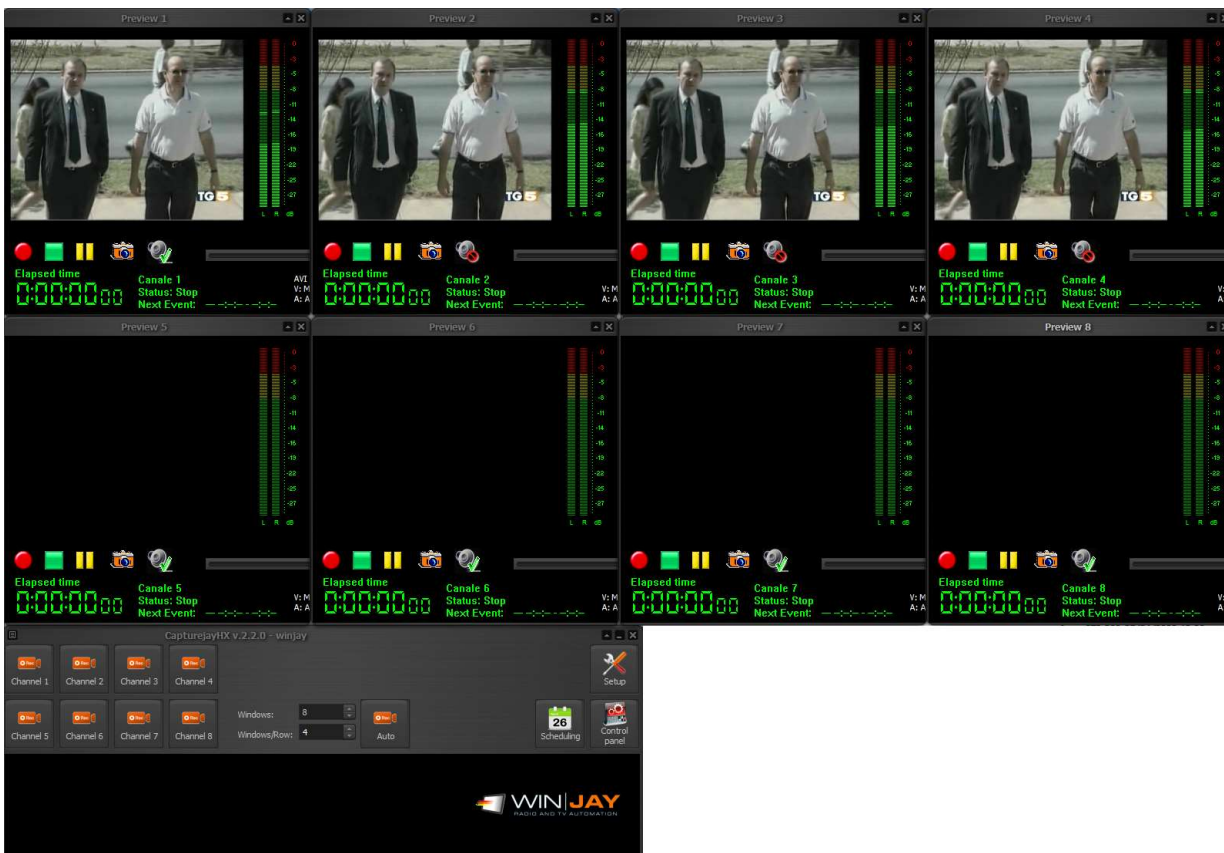


# Chapter 1: The main window



This is the main window, which appears when the CapturejayHX application is started. The buttons allow to activate the main features and recall the recording windows related to the each of the 8 available channels.

For example, in the following screen-shot, all the 8 recording windows have been opened to operate recording for 8 corresponding channels, with the main window on the bottom:



You can freely move and resize recording windows on your desktop, their position is automatically stored so that the next time the software is started, the window itself will appear in the same size and position.



## Detailed description

- **Channel 1-8 button**



Open the recording window corresponding to the indicated channel.

- **Auto window**



This button allows to automatically open, resize and position the desired number of recording windows on the screen according to the specified values, for example, 8 windows with 4 windows per row.

- **Schedule button**



Opens the recording schedule window.

- **Control panel button**



Opens a special panel offering big buttons, to operate the 1<sup>st</sup> recording channels from a touch screen.

- **Setup button**



Opens the setup window to set all the application operating parameters.

- **Your TV station logo (bottom display)**

Clicking on the logo a secret panel appears showing some scrolling informations about the software, current version and enabled features. At the end, your logo appears again automatically.



- **Recording windows**

Each of the 8 windows allows to operate video preview and recording for the related channel. You can freely move and resize recording windows on your desktop, their position is automatically stored so that the next time the software is started, the window itself will appear in the same size and position.



## Detailed description

- **Rec button**



Starts audio/video capturing. If the recording mode is set to “ask filename”, a dialog box will appear to type the desired file name.

- **Skip button**



As soon as recording is started, the Rec button icon will change to “Skip” mode: if the button is pressed while recording, capturing is switched to a new file without any frame loss.

- **Stop button**



Stops video capturing and turns back to preview mode.

- **Pause button**



Pauses capturing to file. Click the Rec button again to continue capturing.

- **Frame capture button**



Press the button to capture the current frame on Hard Disk as BMP or JPG picture, depending on settings made in the software setup window.

- **Audio monitoring**

Switches on/ off the captured audio monitoring for the related channel:



Disables audio monitor for that channel



Enables audio monitor for that channel

- **File elapsed time**

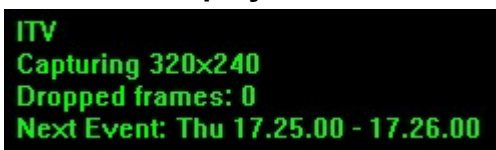


Shows in minutes:seconds.tenths the length of the video segment being logged. The counter is updated in real-time.

- **Audio input slider**

Sets the audio input level depending on your incoming audio signal.

- **Status display**



This panel indicates the following informations: user-set channel denomination, current software status (Stop, recording, preview, etc.), next scheduled event.

- **Audio/video codecs**

The caption on the right of the status display show the currently set audio/video format and codecs, and realtime indication of disk space left.

- **Audio input VU-meters**

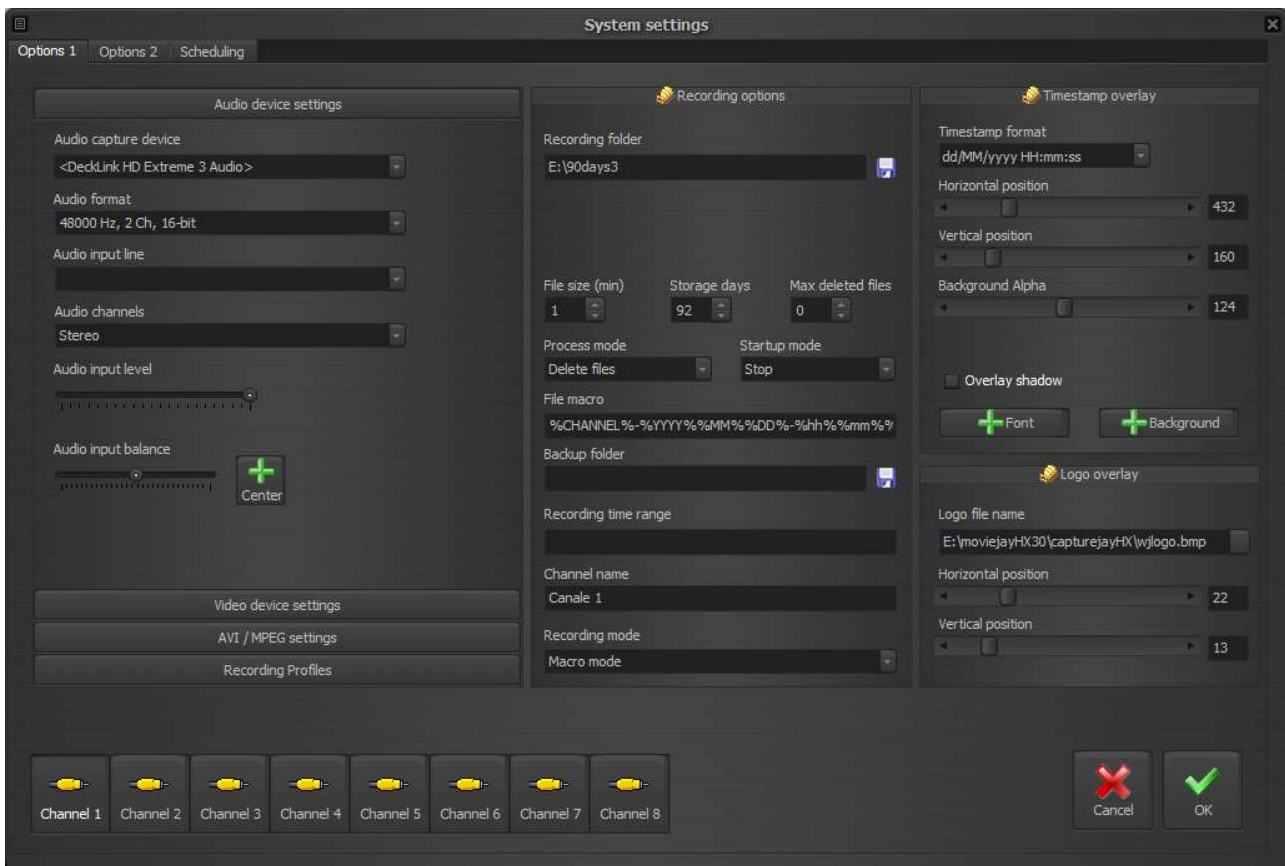


The VU-meter shows in real-time the input and output audio levels. Signal is represented as peak level in dBs, where the 0 dB is the absolute maximum before a clipping occurs. The VU-meter also includes a peak-hold feature: the peak level

segments are temporarily left visible before resetting themselves.

When the input is set to “WebCapture”, an edit box just on the top of the audio slider allows to type the URL to load into the browser. You can interact with mouse and keyboard (for example, type a search on Google or click to play a YouTube video) just like a regular web browser.

# The setup window



The setup window allows to set various hardware and software settings such as the capture card, audio and video codec, recording folder, etc.).

For each of the available channels, a group of operating switches may be set according to your specific requirements.

Though full setup of configuration is allowed, settings related to features not included in your purchased package will not be working.

Most of the changes are applied immediately but for initial configuration a restart will be required.



## Detailed description

### Video device settings

- **Capture source**

Sets the capture source between capture device (that you can select from the box below), network playback or virtual object. The button on the right allows to update the list of available Virtual Objects.

- **Source URL**

Sets the source URL if the capture source capture source is set on network playback.

- **Video capture device**

Sets the video capture card used for video input as well as

- NDI receiver: sets the video input to Newtek NDI (Network Device Interface) streams. The list of available streams will be shown into the Video Input Line box.
- WebRTC: sets the video input to WebRTC streams. The list of available streams will be shown into the Video Input Line box.
- Medialooks DXGI/DX11 Screen Capture: this is a special screen capture virtual card, that can be set to capture the screen activity into a file or streaming.
- Medialooks WebCapture: this is a special web page capture feature. Use the Video Input Line box to type the URL you wish to display.

All the related boxes below (video format, input line etc.) will be automatically updated accordingly.

- **Video format**

Sets the capture device input video format.

- **Video input line**

If the card offers more input lines (for example analogue and SDI) sets the desired video input. This same box lists the available streams in case NDI or WebRTC options are selected. The button on the right allows to update the list of available streams.

## **Audio device settings**

- **Audio capture device**

Sets the audio capture card used for audio input.

- **Audio format**

Sets the audio format for capturing.

- **Audio input line**

If the card offers more input lines (for example analogue and SDI) sets the desired audio input.

- **Audio channels**

- Stereo: this is the default setting, recording is performed in stereo.
- Left: should you wish to use a stereo sound card to capture two distinct mono channels, this setting allows to capture the audio input from the Left channel only, but record as mono on both channels.
- Right: as above, for the Right channel.

- **Audio input level**

Sets the audio input level depending on your incoming audio signal.

- **Audio balance**

Sets the audio input balance, for example, if you just need to capture the Left or the Right channels. Usually, you may leave the cursor in the center position.

## Codec settings

- **Encoding format**

Sets the encoding format to use for video preview and encoding. This can be different from the actual video input resolution, so for example you can set the capture device to capture an HD video but encode to SD.

- **File or streaming format**

Sets the output file format (MPEG, MOV, etc.) or streaming format (RTMP, UDP, etc.).

The associated buttons on the right open a dedicated window to customize muxer params:



- **Video / audio codec**

Sets the desired video codec for the video file or streaming output. As above, the associated buttons on the right open a dedicated window to customize codec params

You can change any of the settings shown by typing a new value in the related column, or reset a single setting to its default value by deleting the corresponding value in the grid.

- **Cancel button**



Cancels changes and closes the codec params window.

- **Reset button**



Resets to defaults all settings related to the selected codec, and closes the window.

- **OK button**



Confirms changes and closes the codec params window.

- **Audio codec**

Sets the desired audio codec for the video file or streaming output. The associated button on the right allows to customize codec params.

- **Filename or URL**

If the codecs are set to a streaming format, here you specify the URL for the streaming output. Example for UDP streaming: `udp://192.168.0.8:5000` to a specific target, or `udp://192.168.0.255:5000` to all destination IP addressed on that class.

In the example, 192.168.0.8 is the target IP, 5000 is the target port.

To check the stream, you can run VLC on the target workstation 192.168.0.8 and open the network stream as: `udp://@192.168.0.8:5000`

Other than the settings listed in the popup box, it is also possible to specify many of the additional settings in the form of `udp://hostname:port?your_param=your_param_value` as listed in the FFmpeg documentation at:

<https://www.ffmpeg.org/ffmpeg-protocols.html>

For example, should you wish to specify the a TTL value of 1 for UDP streaming, the above sample can be modified as: `udp://192.168.0.8:5000?ttl=1`

For streaming in RTMP format, a sample URL is like the following:

`rtmp://User:Password@server.com/live/myStreamName`

In case any of the fields like username or password contain any special characters (like the @), you can alternatively use an extended authentication string, like the following:

`rtmp://[SERVER]/[APPLICATION] flashver=FMLE/3.0\20(compatible;\20FMSc/1.0)  
live=true pubUser=[LOGIN] pubPasswd=[PASSWORD] playpath=[STREAM_ID]`

More examples:

FlashWebTown:

`rtmp://User:Stream@flashwebtown.com/live/test`

DaCast:

`rtmp://p.ep348639.i.akamaientrypoint.net/EntryPoint  
flashver=FMLE/3.0\20(compatible;\20FMSc/1.0) live=true pubUser=User  
pubPasswd=Password playpath= myStreamName`

YouTube:

`rtmp://a.rtmp.youtube.com/live2/myStreamName`



- **Enable WebRTC output**

Enables/disables simultaneous playout output to WebRTC.

WebRTC is a new technology that provides browsers and mobile applications with Real-Time Communications (RTC) and allows audio/video data to be transferred between desktop applications and browsers like Google Chrome and Mozilla Firefox without any plugins. WebRTC has a number of awesome features like adaptive bit rate, direct peer-to-peer data transfer and low latency. Clearly, the WebRTC protocol allows as well to send video to and from any Winjay application, for example a CapturejayHX can capture the WebRTC stream generated from a moviejaySX in any other location in the world via the internet.

- **WebRTC signaling server**

Sets the WebRTC signaling server in the form address:port

- **Enable NDI renderer**

Enables/disables simultaneous playout output to Newtek NDI (Network Device Interface) protocol that allows transmitting video streams via LAN instead of SDI. The NDI protocol allows to send video to Newtek compatible devices and other Winjay applications, for example a CapturejayHX can capture the NDI stream generated from a moviejaySX on any other workstation in the LAN.

## **Recording profiles**

When using CapturejayHX as capture/ingest server, should you wish to often change recording settings (codecs, input resolution etc.), once you perform the required audio/video codec and multiplexer settings, this feature allows to assign a name and store these settings under a profile, that can be easily recalled later



### **Quickstart**

- Storing a profile: Set recording format, audio/video codec audio and multiplexer as required, type a profile name in the box underneath the grid, then click the Save button.
- Recalling a profile: Double click the desired profile on the grid: the codecs and multiplexer boxes will automatically update according to previously stored settings.
- Deleting a profile: Highlight the desired profile on the grid, the click on the Delete button.



## Detailed description

- **Profiles grid**

Shows the list of profiles stored. The columns show the recording format and user description set.

- **Description**

Type on this box the name you wish to assign to the profile.

- **Feature**

Assigns the current profile to a specific feature:

- Disabled: no special feature active
- Default CH1... CH8: sets the current profile as default profile for the corresponding channel. When the application is started, this profile will be automatically assigned.
- REC: sets the current profile as default profile to be recalled when you click the REC button from the big keyboard.
- Streaming1: sets the current profile as default profile to be recalled when you click the Streaming1 button from the big keyboard.
- Streaming2: sets the current profile as default profile to be recalled when you click the Streaming2 button from the big keyboard.

## Recording options

- **Recording folder**

Sets the default folder where recordings will be stored to.

- **File size box**

Sets the file size in minutes for each logged segment. Taking into account that you may not play a file until recording ends (or you stop recording manually), and that there's a small time gap between closing a file and starting the next one, this is clearly a compromise between file size and time you'll have to wait before it is possible to play the logged segment. Except for specific circumstances, we usually suggest a value of 60 minutes (1 hour) for each file. Set to 0 to disable this feature.

- **Segmentation by hour**

Should you don't wish to split logged segments according to a set size in minutes but instead at the exact hour jump, this box sets a series of comma separated hour clocks when the recording will be segmented to a new file. For example, the string

0,6,8,9,10,12,17,18,20

will produce a 6 hours file starting from midnight to 6 o'clock, a 2 hours file from 6 to 8, a 1 hour file from 8 to 9, and so on.

Should you wish to use this mode, we suggest to set the file size box to 0 in order to disable file segmentation by length in minutes.

- **Box File split mode**

Sets the action to undertake when the recording time limit set is reached:

- Stop: stops recording and waits in Stop mode.
- Auto restart: switches recording to a new file, without losing any frame. The new file name is automatically assigned based on the macro setting. This is the mode to set when using CapturejayHX as compliance logging system.

- **Days to store**

CapturejayHX can be set to automatically rotate logged files to keep track of a desired number of days and if you wish, can automatically erase older days to make room for the new ones. Type here how many days you wish to store before the oldest day of recording is erased to make room for the new ones (usually 90, 30, 42, depending on your local regulations or your requirements).

- **Max deleted files**

Here you may set the maximum number of video segments to delete each time the purge routine is fired. Taking into account that CapturejayHX runs an obsolete recordings purge each hour, and supposing segments of 1 hour each, you should set this value to 1 (i.e. each hour, CapturejayHX deletes not more than 1 segment). Thus, if the system clock is accidentally moved forward, deletion of huge quantities of video segments which should be kept into the archive is avoided. To disable this feature, set the value to 0.

- **Process mode**

For obsolete clips whose date is older than maximum days to store, sets action to execute:

- Delete files: clips are deleted to create space for the new ones
- Move files: clips are moved to a backup folder

- **Startup mode**

- Preview: CapturejayHX automatically starts in preview mode, so the incoming video is shown.
- Capture: recording is started automatically at startup. This is the suggested setting when CapturejayHX is used for logging purposes, so recording will be restart automatically at each startup (for example, after a power failure has occurred).

- **File macro**

Sets the macro used to generate filenames. You can mix static text with macros, these latter are delimited from the symbol %, and are automatically replaced at runtime:

- %WINUSERNAME% - Sets the current Windows username
- %CHANNEL% - sets the channel name
- %YYYY% - sets the year
- %MM% - sets the month
- %DD% - sets the day
- %hh% - sets the hour
- %mm% - sets the minutes
- %ss% - sets the seconds

- **Backup folder**

If the storage management mode is set to “move files”, browse your hard disk to specify here the folder where obsolete clips will be archived, once maximum on-line days to are expired.

- **Recording time range**

If you don't need to run video jogging 24 hours a day, here you may specify a time range where recording will be automatically started. Outside this interval, recording is automatically stopped. For example, the string 09.30.00-10.15.00 enables recording from 9,30 to 10,15. To disable this feature, just clear this box.

- **Channel name**

Sets the input channel name, which is shown on the main recording window to identify the channel.

- **Recording mode**

- Logging mode: use this setting for 90 days logging; file names assigned to video segments will be generated automatically.
- Ask filename: use this setting when CapturejayHX is used as manual ingest system; when you click the Record button, a dialog box will ask you to type the desired file name. The default recording folder is the 1st one set in the “recording folders” box.

## Timestamp overlay section

- **Enable timestamp**

If checked, enables the automatic timestamp overlay to logged video which is updated in realtime while recording. It is also possible to record clean without overlays, and superimpose the timestamp while playing the logged video with the CapturejayHX Player module.

- **Timestamp format**

Sets the desired format for displaying the date and time. You can select an item from the drop-down box or type your macro directly, for example HH:mm:ss will just overlay the time, without the date.

- **Horizontal / vertical position**

These cursors set the logo horizontal and vertical position on the captured video. Values in the boxes just right of the cursors show the absolute position in pixels.

- **Background Alpha**

Sets the background transparency value: 0=not visible, 255=full, or any intermediate value, according to the “background color” set.

- **Overlay shadow checkbox**

If checked, the time stamp will be painted with a slightly dark edge in order to improve readability.

- **Font button**

Opens the font settings window, to set font, color and font size for timestamp overlay.

- **Background color button**

Opens a dialog window to set the color to use for the timestamp background.

## Logo overlay section

- **Enable overlay**

If checked, enables the logo overlay to incoming video.

- **Logo filename**

CapturejayHX allows to overlay a static picture to the logged video. Use this box to browse your Hard Disk and select the filename with the picture to overlay. To disable this feature, just clear the contents of the box.

- **Logo position**

These cursors allow to position the logo on the video window. Values in the boxes just right of the cursors show the absolute position in pixels.

- **Alpha transparency**

Sets the logo transparency. 0 equals to a invisible, 255 equals to full color. The value in the box right of the cursor shows the set value.

- **Size**

Sets the logo size in percentage. 100 equals to original size, lower values reduce the size down to a minimum of 1%.

## **Frame capture section**

CapturejayHX includes a powerful frame capture feature on the incoming signal being logged. The player module allows to perform the same capture feature from video segments already logged on disk.

- **Picture type**

Sets the format to use for captured frames (JPG, BMP, etc).

- **Capture Path**

Sets the path where the captured frames will be saved. Pictures are saved to disk according to the same macro specified for clips, with the extension corresponding to picture type.

## **Time Synchronizer section**

CapturejayHX features a built-in time synchronizer which allows to keep your system clock always updated thanks to time servers on the Internet.

- **Time Server**

Here, you'll have to specify the time server to use. Just select your server from the drop-down box.

- **UTC difference**

Time servers on the Internet always work on the UTC time, so here you'll have to specify the time shift between UTC and your local time.

- **Get Time Now**

Press the button to attempt a connection to the specified time server: if this is successful, in a matter of seconds the system time will be automatically updated according to the server time.

## **Various section**

- **Language**

CapturejayHX is multilanguage and any caption used in the software is read from a text file you can easily tailor to your needs, or copy-and-paste to create new languages. The software comes with English and Italian LNG language files, found in the software setup folder. To edit your default language, just select your favourite one from the available languages in the drop-down box.

- **Database path**

Sets the path to the centralized database which is going to retain all the informations about logged segments, scheduling, etc. Except for specific requirements, we suggest to leave the default settings.

- **Log File**

Sets a filename with full path where LogjayVX will write its operation log (for example timestamp of recording start and end, software startup and shutdown, etc.). This is a plain text file, which you can open with Windows Notepad.

- **Skin select**

Click on the button to the right of the edit box and browse your skin folder to select your favourite skin.

- **Lock windows**

If checked, locks windows' position and size previously set without the lock activated and prevents accidental closing.

- **Reset codec settings**

If checked, at the application startup resets the codecs' user settings such as bitrate, etc. This feature turns useful in case recording can't be started anymore after any vital settings have been accidentally changed, in such case after the reset at startup it will be possible to manually set desired values again. If you make use of presets, you can enable this feature since presets will automatically reload also the user settings eventually set.

## **Keyboard shortcuts section**



You can optionally associate the main application functionalities to a keystroke. For this purpose, for each required feature you wish to enable:

- 1) Select the desired keystroke in the drop down box (for example F10)
- 2) If you wish to create a a keystroke combination with Alt, Ctrl, Shift, check the related box on the right.

## **Password section**

Optionally, you may set a password to limit access to the setup window only to authorized personnel. You will be requested to type this same password whenever you press the “Rec” and “Stop” buttons on the main recording window.

- **Old password**

To edit the current password, type the old password in this box. If the password is the right one, the icon  changes into  and you will be allowed to type the new password into the other. Otherwise, you will not be allowed to make changes. The default password set on the system is “winjay”, without quotes. With this default settings, access is granted to everybody and no password request is performed.

- **New password**

Once you typed the old password in the first box, just type here the new password to set.

## **Video switcher section**

When using CapturejayHX for scheduling recordings according to date/time or incoming triggers, the software is optionally able to drive a video switcher (for example with 4 satellite receivers on its inputs) so that the required source is automatically selected for the specific recording schedule.

- **Switcher type**

Sets the kind of video switcher in use:

- Disabled: No video switcher in use
- ELCA: drives the Elca SR8P - SR16 - MC2424 - MC 3225 video switchers via RS232
- Elca MX3232 - MX3224 - MX2424 - MX1616 - MX88, for the Elca MX series
- CEM Ibrida: drives the CEM Elettronica Ibrida controller via RS232
- BTS MS16: drives the BTS MS16 via RS232
- Elpro SAVIS204: drives the Elpro SAVIS204 via RS232
- Kramer Protocol2000: as above, for any Protocol2000 compatible Kramer switcher.
- Knox Video RS16x16HB - ProSwitch Series: for the indicated Knox switchers
- Pesa Bobcat – drives the Pesa Bobcat via RS232
- Extron Matrix Series – drives the Extron Matrix Series (Series 50 / 3200 / 6400 / 12800) and MAV 44 / 48 / 84 / 88 via RS232
- Extron Switcher Series – drives the Extron Switcher Series
- Inday: drives all the range of Inday switchers

- **Switcher COM Port**

If you wish to drive your video switcher via RS232, you have to specify the COM Port to use for this purpose.

- **Switcher COM speed**

Here you need to set the COM port speed depending on your video switcher requirements (usually 9600 bps).



- **Cancel button**



Cancels updates and closes the setup window. You'll see a dialog box asking for confirmation.

- **OK button**



Confirms updates and closes the setup window.

Press the “schedule” tab to enter the scheduling page, which allows to schedule recordings according to time and day of the week, or via external triggering.

**Lapsejay Setup**

Settings | Options | Scheduling

Trigger settings

Denominazione profilo	Canale	Start	Stop
Test 1	1	10.00.00	10.30.00
▶ Test 2	1	11.00.00	11.50.00

Schedule name:  Start time:  End time:

Trigger:

Channel:

Action:

Recording type:

File name or folder:

Sunday  
 Monday  
 Tuesday  
 Wednesday  
 Thursday  
 Friday  
 Saturday

**BROWSE**  
2:2



### **Quickstart (scheduling a clock driven recording):**

In the following example we're going to schedule a recording each Monday, Wednesday and Friday, starting at 10.00.00 AM up to 10.30.00 AM. Each time, the existing file (if any) will be overwritten by the new recording.

1. Press the "New" button to switch the database to insert mode.
2. Insert a name for your new scheduling, set 10.00.00 as start time and 10.30.00 as ending time, then check the Mon, Wed and Fry boxes.
3. In the "trigger" box, select the "clock driven" item to schedule your recording according to your start and ending time.
4. In the "channel" box, select the channel where you want to schedule your recording, for example channel number 1.
5. The "action" box will have no effect, since it is only used to associate an action to a trigger. In the "recording mode" box, select the "file name" item, browse your Hard Disk to set your storage folder, then type the file name which will be used for your recording.
6. Finally, press the OK button to confirm when done.

### **Quickstart (scheduling a triggered recording):**

In the following example we're going to schedule a recording each Tuesday and Thursday, starting will be triggered by the closure of Trigger 1 but only between 10.00.00 AM up to 10.05.00 AM. This time, files will be named each with its own timestamp according to the recording start time, and put in the specified folder. To stop recording according to another trigger, you'll just have to add a similar scheduling.

1. Press the "New" button to switch the database to insert mode.
2. Insert a name for your new scheduling, set 10.00.00 as start time and 10.05.00 as ending time, then check the Tue and Thu boxes.
3. In the "trigger" box, select the "Trigger 1 close" item.
4. In the "channel" box, select the channel where you want to schedule your recording, for example channel number 1.
5. In the "action" box, select the "start" item. In the "recording mode" box, select the "folder name" item, then browse your Hard Disk to set your storage folder.
6. Finally, press the OK button to confirm when done.



### **Please note:**

In case a recording is still running on the same channel where a schedule is about to start, a file switching will be performed, i.e. the previous segment will be closed and recording will continue under the new filename set in the scheduled item.



## Detailed description

- **Schedules grid**

Contains the list of schedules in the database. You can navigate the list with the arrows on the right. Left-clicking on each item on the grid, related details are shown in the corresponding controls below in the window.

- **Schedule name box**

Contains a name for the current schedule, for faster recalling. For example, “morning news”.

- **Trigger box**

Sets the trigger which will activate the current schedule. For example: “Trigger 1 Close” will activate the schedule when trigger 1 closes, “Trigger 2 Open” will do the same when trigger 2 opens, and so on. Setting the “clock driven” item, recording will start and stop according to scheduled start and stop time, triggers will be ignored.

- **Channel box**

Sets the channel (from channel 1 to channel 4, depending on your purchase) where you want to schedule your recording.

- **Action box**

Sets the action which a trigger will undertake:

1. Start: recording will start with the previously loaded profile.
2. Stop: recording will stop.
3. Load Profile: Logjay will load the specified recording profile and start recording.

If the current schedule is clock drive, this setting is ignored.

- **Recording mode**

Two recording modes are available:

1. Date/time: files with the logged audio will be named according to recording start date and time: this mode should be used for long-time logging purposes, since each recording will be assigned a different file.
2. Specify file name: the audio file will be always named the same way, according to your settings. Each new recording will overwrite the previous ones, which will be lost, of course.

- **Storage folder / filename**

If recording mode has been set on date/time, just click on the icon and browse your hard disk to select the folder (local or LAN) where the logged audio will be stored.

Otherwise, if recording mode has been set on a specific file name, this box will allow browsing for your desired path and file name which will be overwritten for each new recording.

Optionally and for the File name mode only, you can edit the box to set the macro used to generate filenames. You can mix static text with macros, these latter are delimited from the symbol %, and are automatically replaced at runtime:

- %SCHEDULE% - Sets the current schedule name
- %WINUSERNAME% - Sets the current Windows username
- %CHANNEL% - sets the channel name
- %YYYY% - sets the year
- %MM% - sets the month
- %DD% - sets the day
- %hh% - sets the hour
- %mm% - sets the minutes
- %ss% - sets the seconds

- **Start time**

If the current schedule is “clock driven” type, you’ll have to type here the start time of your recording. Otherwise, when external triggering is used, the start time is considered as trigger enable start time, meaning that the trigger event is taken into account only if between the start and end time specified. This way, you may restrict your recording just to your desired schedule, ignoring unwanted triggering.

- **End time**

As above, this is the end time for your recording in the case of “clock driver” events, or trigger enable end time when external triggering is used.

- **Days enabled**

This group of checkboxes from Sunday to Saturday allow to enable the current schedule for each day of the week. This way, you may also add totally different schedules for each day of the week.

- **Switcher Input/Output**

Set the input/output switching to perform for the current schedule in order to select the required video source, for example input 5, output 1.

- **Profile**

Selects the recording profile, if required.

- **New button**



Switches the database to insert mode to add a new schedule.

- **Edit button**



Switches the database to edit mode, to edit settings for the current schedule.

- **Cancel button**



Deletes the current scheduling. You'll see a dialog box asking for confirmation.

- **Cancel button**

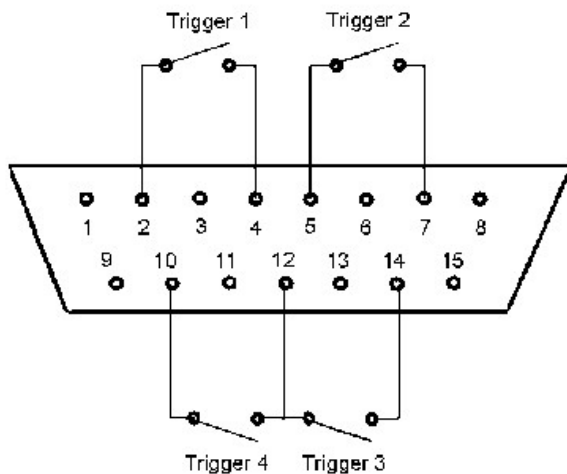


Cancels updates and switches to browse mode. You'll see a dialog box asking for confirmation.

- **OK button**



Confirms updates and switches to browse mode. If the database is already in browse mode, closes the setup window.



For the trigger feature to work correctly, first of all you should connect to the joystick port using the diagram on the left (for the preliminary checks you may also wish to use an ordinary joystick). You also have to add some 100 K-Ohm resistors between pins 1-3, 1-6, 9-11, 9-13: otherwise Windows will report the joystick as “not connected” and triggers won’t work. You should also jump together pin 12 with pin 4 (or 5).

The most recent motherboards don’t offer any joystick port anymore, so you should use an USB-joystick converter, or alternatively buy any USB joystick and then wire your triggers in place of the original buttons. When you plug the device, Windows automatically installs the driver and the joystick is listed in the “devices and printers” section. Right-click to select the “game device setting” menu item: you will see the installed device inside the window. Click on “properties” to test the buttons which will be used as triggers.

## Chapter 2: The player module

Segments with the logged video will be found on your storage folders timestamped with recording start time, as yyyyymmdd-hhmmss.avi – that way it will be easy to trace your desired segment. However, whenever you need to play the logged video, running the CapturejayHX player will ease the task of locating the desired passage. CapturejayHX includes a free licence of CapturejayHX Player Basic, which runs on the same PC as CapturejayHX recording module as well as any workstation in your LAN, without any added cost.

CapturejayHX Player Basic main window:



By purchasing a licence for CapturejayHX Player Pro, new features will be added, such as dual player (to monitor two channels at once), DVD burning, and video export/reencoding features.



CapturejayHX Player Pro main window:



### Quickstart (playing the logged video):

1. Using the drop-down boxes, select the channel, date and time from which you wish to start playing the logged video.



2. Press the Play button to start playing.
3. In play mode, the time display shows in real time the timestamp of the logged video, and the slider the relative position in the audio file containing the desired segment. Click and drag the slider to move back and forward.



- **Frew button**



In play mode, switches to fast rew seek mode.

- **Rew button**



In play mode, switches to rew seek mode.

- **Play button**



Starts playing the desired logged segment according to selected channel and date/time.

- **Pause button**



In play mode, switches to pause mode.

- **Stop button**



Stops playing the logged audio.

- **Fwd button**



In play mode, switches to forward seek mode.

- **FFwd button**



In play mode, switches to fast forward seek mode.

- **Sync players button**



Sometimes you may wish to play simultaneously recordings from 2 different channels (for example, in order to compare your schedule and your competitors). Once the first player is started and running, select the channel, date and time on the 2<sup>nd</sup> player and then click on this button: the 2<sup>nd</sup> player will start playing the selected channel and keep in synch with the first one.

- **Audio monitoring**

When using both players at once on the same soundcard, you may wish to separately enable or disable audio output for each player:

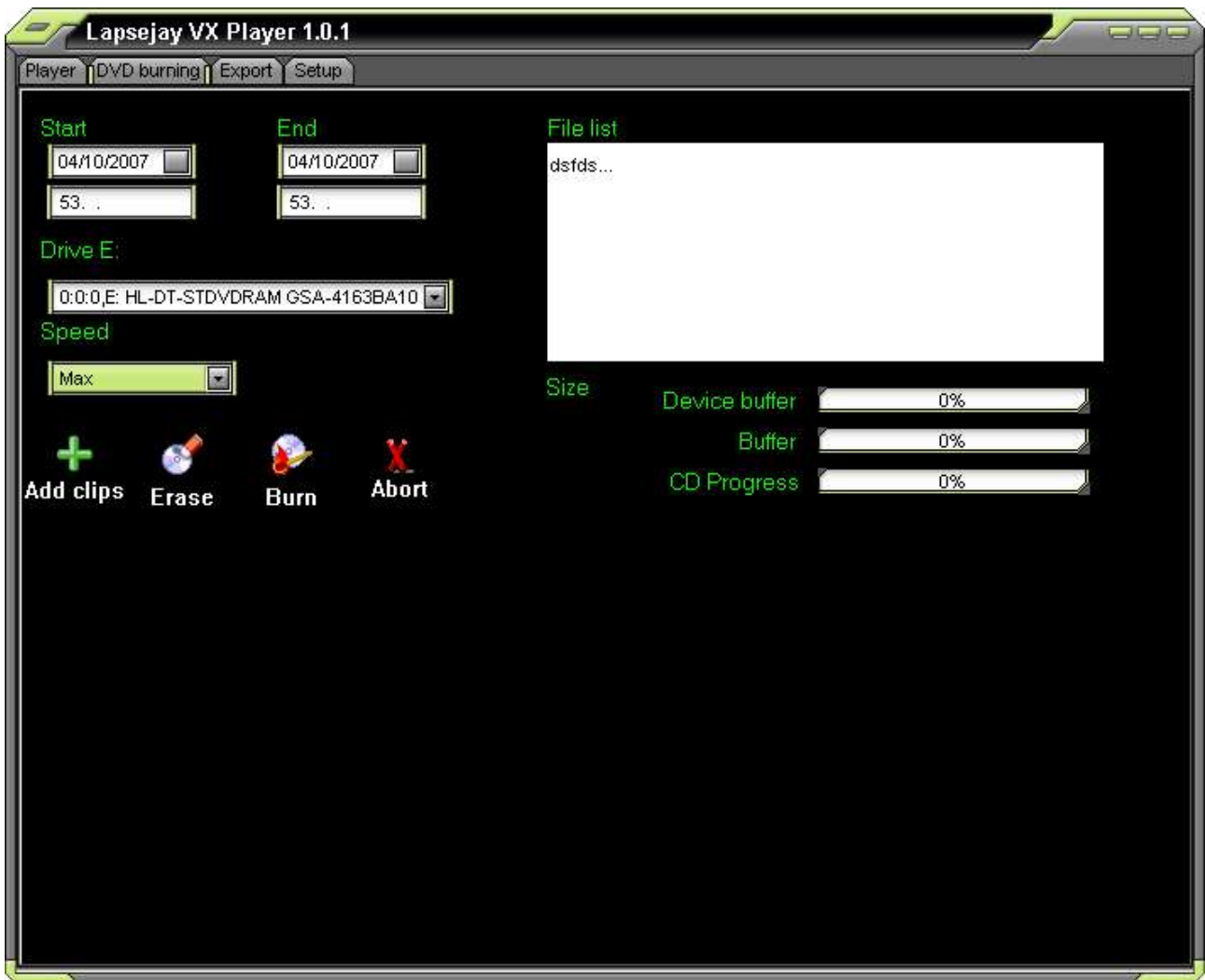


Disables audio output for the corresponding player.



Enables audio output for the corresponding player.

Click on the “DVD burning” tab to enter the related page, which allows to burn DVDs with your recorded files:



- **Start - end date/time**



These controls allow to filter your recordings database according to start and end date/time interval, for example you may wish to select only recordings from 02/10/2007 10.00.00 to 05/10/2007 12.00.00

- **Add clips button**



Once you have set your date/time interval, click the “Add clips” button to add selected clips into the filelist for burning your DVD.

- **Drive setting**



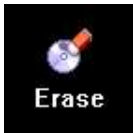
Sets the DVD drive to use for burning your DVD.

- **Speed setting**



Sets the speed for burning your DVD

- **Erase button**



Click on this button if you wish to erase your DVD-RW before burning

- **Burn button**



Click on this button to start burning your DVD when everything has been set.

- **Abort button**



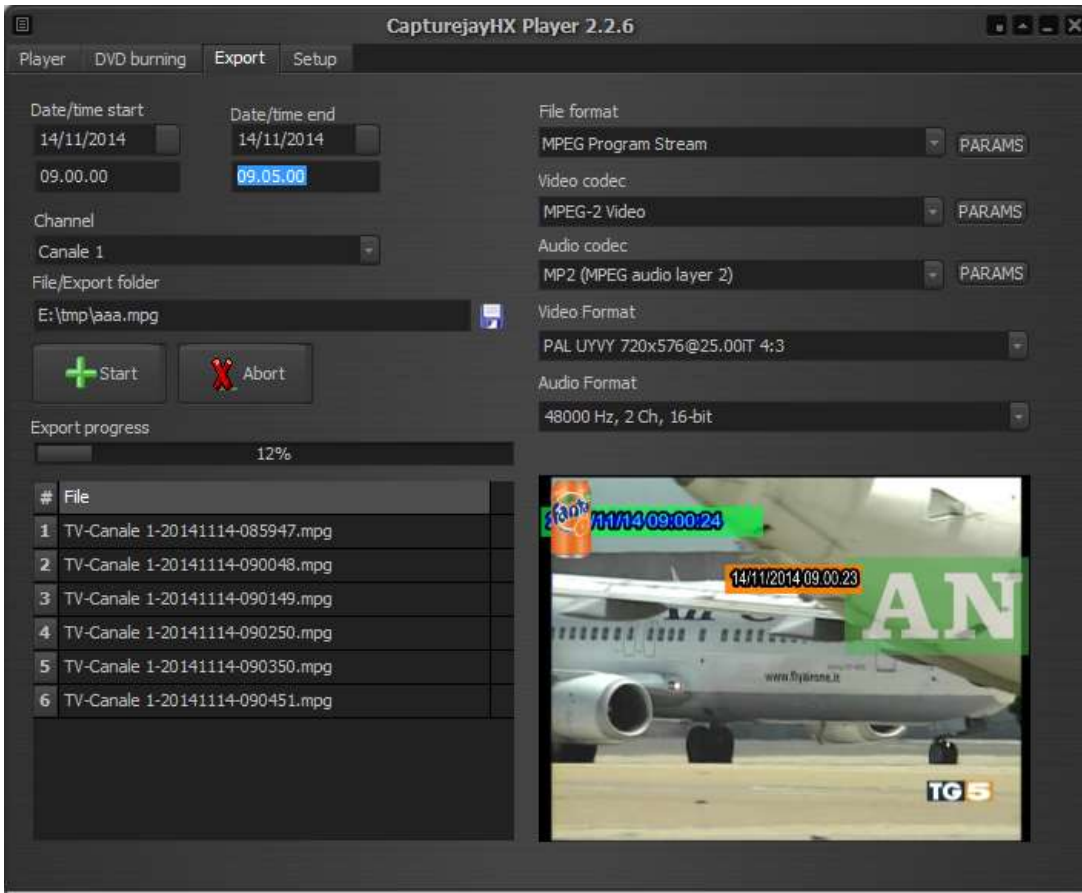
Click on this button should you wish to abort the DVD burning process.

- **Progress status**

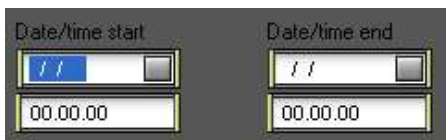


While the DVD burning is progressing, these bars will be updated with the buffer status and DVD burning progress.

Click on the “Export” tab to enter the related page, which allows to join and convert your recorded segments to another video format:



- **Start - end date/time**



These controls allow to filter your recordings database according to start and end date/time interval, for example you may wish to select only recordings from 02/10/2014 10.00.00 to 05/10/2014 12.00.00

- **Channel**

Selects the channel to export.

- **Export File/folder**

Sets the filename or folder where re-encoded clips will be stored.

- **Start button**



Click this button to add the selected clips between the start/end date and time set above and start the exporting.

- **Abort button**



Click on this button should you wish to abort a running exporting process.

- **File or streaming format**

Sets the output file format (MPEG, MOV, etc.).

The associated buttons on the right open a dedicated window to customize muxer params:



- **Video / audio codec**

Sets the desired video codec for the video file or streaming output. As above, the associated buttons on the right open a dedicated window to customize codec params

You can change any of the settings shown by typing a new value in the related column, or reset a single setting to its default value by deleting the corresponding value in the grid.

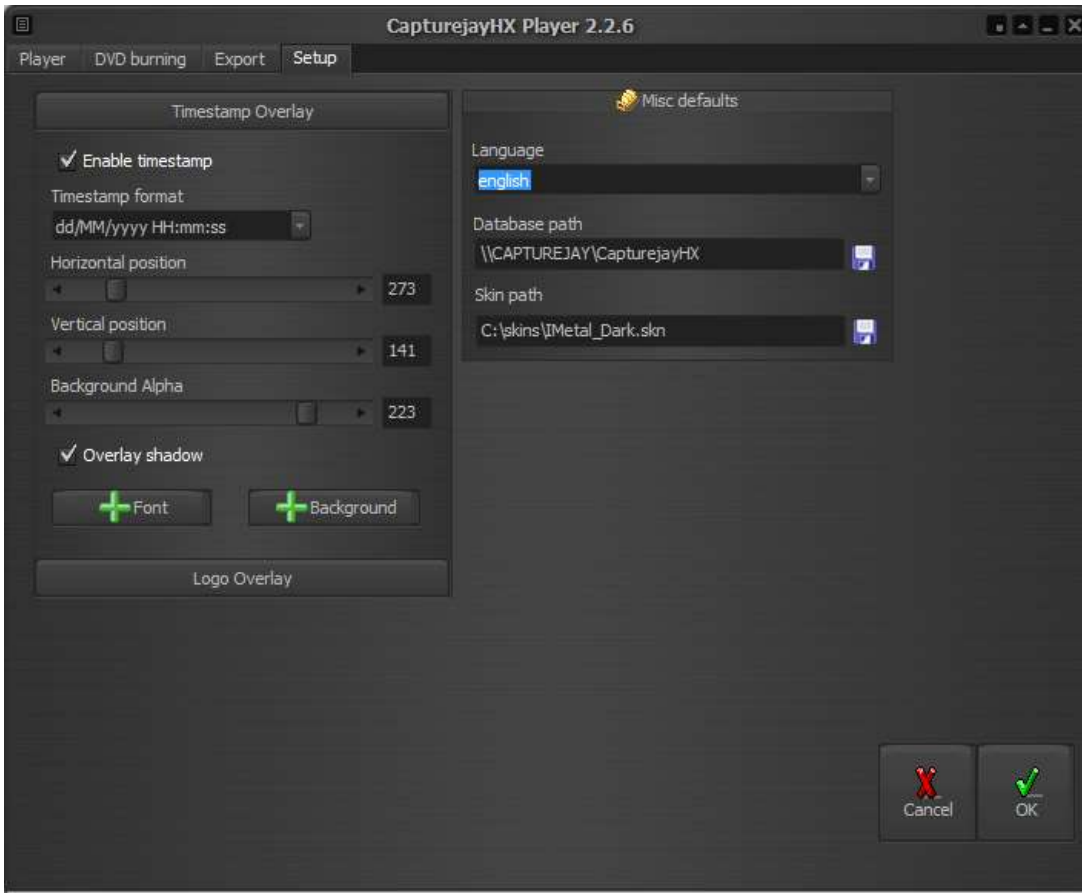
- **Video format**

Sets the export video format.

- **Audio format**

Sets the export audio format.

Click on the “Setup” tab to enter the setup page, which allows to set the various player’s options.



- **Timestamp and logo overlay**

If you wish to perform clean recordings without adding any timestamp and logo overlays, then you can superimpose the timestamp while playing or exporting the logged video with the CapturejayHX Player module. For more details, please refer to the same section on the CapturejayHX recording module.

- **Language**

CapturejayHX is multilanguage and any caption used in the software is read from a text file you can easily tailor to your needs, or copy-and-paste to create new languages. The software comes with English and Italian LNG language files, found in the software setup folder. To edit your default language, just select your favourite one from the available languages in the drop-down box.

- **Database path**

Sets the database path where each player module should read search for informations concerning the logged video. If the player module runs on the same workstation as the recording module, just leave the default setting, otherwise please specify the path to the database on the recording workstation (for example \\logger\c\program files\capturejayHX).

---

- **Skin select**

Click on the button to the right of the edit box and browse your skin folder to select your favourite skin.

- **Cancel button**



Cancels changes and closes the setup window.

- **OK button**



Confirms changes and closes the setup window.



---

## Appendix: Additional settings

The capturejay.ini offers some additional settings which are not available from the user interface, in order to handle specific usage scenarios.

In case when attempting to play a segment on CapturejayHX Player a different one is played back, or when starting the export procedure the requested segments between the selected date/time are not included, probably it will be required to force date/time settings to match your system settings, by correctly setting the following rows inside the [Player] section:

```
DateSeparator = "/"  
TimeSeparator = "."  
ShortDateFormat = "dd/MM/yyyy"  
LongTimeFormat =
```

---

# End user licence agreement

NOTICE TO USER: THIS IS A CONTRACT. PLEASE READ THIS DOCUMENT CAREFULLY BEFORE INSTALLING THIS SOFTWARE. THE INDIVIDUAL OR ENTITY INSTALLING THIS SOFTWARE (THE "END USER") AGREES TO BE BOUND BY THE TERMS OF THIS LICENSE. IF YOU DO NOT AGREE TO THE TERMS OF THIS LICENSE, YOU WILL NOT BE ABLE TO USE THE SOFTWARE.

## **CAPTUREJAY SOFTWARE END USER LICENCE AGREEMENT FOR 1 (ONE) COMPUTER**

### **WINJAY S.R.L. End user licence agreement**

The enclosed computer program(s) and the accompanying documentation are provided to the End-User by Winjay S.R.L. ("Licensor") for use only under the following terms. Licensor reserves any right not expressly granted to the End-user. The End-User owns the disk on which the Software is recorded, but Licensor retains ownership of all copies of the Software itself. The End-User assumes sole responsibility for the installation, use and results obtained from use of the Software.

This Winjay S.R.L. End User License Agreement (the "Agreement") accompanies software ("Software") and related explanatory written materials ("Documentation"). The term "Software" shall also include any upgrades, modified versions, updates, additions, and copies of the Software licensed to you by Winjay S.R.L. - Winjay S.R.L. grants to you a nonexclusive license to use the Software and Documentation, provided that you agree to the following:

1. Use of the Software. You may:

- Install the Software in a single location on a hard disk or other storage device of up to the number of computers indicated in the the header at the beginning of this Agreement.
- Provided the Software is configured for network use, install and use the Software on a single file server for use on a single local area network for either (but not both) of the following purposes:
  - (a) permanent installation onto a hard disk or other storage device of up to the Permitted Number of Computers; or
  - (b) use of the Software over such network, provided the number of different computers on which the Software is used does not exceed the Permitted Number of Computers. For example, if there are 100 computers connected to the server, with no more than 15 computers ever using the Software concurrently, but the Software will be used on 25 different computers at various times, the Permitted Number of Computers for which you need a license is 25.
- Display, modify, reproduce and distribute any photographs, clip art or other artistic works, in whole or in part, that are included with the Software (unless a specific notice to the contrary is indicated), provided such photographs, clip art or artistic works are not distributed on a stand-alone basis. Such photographs, clip art and artistic works may not be used in the production of lewd, obscene or pornographic material.

- 
- Make one backup copy of the Software, provided your backup copy is not installed or used on any computer.

HOME USE. The primary user of each computer on which the Software is installed or used may also install the Software on one home or portable computer. However, the Software may not be used on the secondary computer by another person at the same time the Software on the primary computer is being used.

2. Copyright. The Software is owned by Winjay S.R.L. and its structure, organization and code are the valuable trade secrets of Winjay S.R.L.. The Software is also protected by United States Copyright Law and International Treaty provisions. You must treat the Software just as you would any other copyrighted material, such as a book. You may not copy the Software or the Documentation, except as set forth in the "Use of the Software" section. Any copies that you are permitted to make pursuant to this Agreement must contain the same copyright and other proprietary notices that appear on or in the Software. Except for font software converted to other formats as permitted in the "Use of the Software" section, you agree not to modify, adapt or translate the Software. You also agree not to reverse engineer, decompile, disassemble or otherwise attempt to discover the source code of the Software. Trademarks shall be used in accordance with accepted trademark practice, including identification of trademark owner's name. Trademarks can only be used to identify printed output produced by the Software. Such use of any trademark does not give you any rights of ownership in that trademark. Except as stated above, this Agreement does not grant you any intellectual property rights in the Software.

3. Transfer. You may not rent, lease, sublicense or lend the Software or Documentation. You may, however, transfer all your rights to use the Software to another person or legal entity provided (1) that you transfer this Agreement, the Software, including all copies, updates and prior versions and all copies of font software converted into other formats, and all Documentation to such person or entity, (2) that you retain no copies, including copies stored on a computer, and (3) that the receiving party accept the terms and conditions of this Agreement.

4. Multiple Environment Software/Multiple Language Software/Dual Media Software/Multiple Copies/Upgrades. If the Software includes, or, in connection with the acquisition of the Software you receive, two or more operating environment versions of the Software (e.g., Macintosh and Windows® ), two or more language translation versions of the Software, the same Software on two or more media (e.g., diskettes and a CD-ROM), and/or you otherwise receive two or more copies of the Software, the total aggregate number of computers on which all versions of the Software are used may not exceed the Permitted Number of Computers. You may make one back-up copy, in accordance with the terms of this Agreement, for each version of the Software you use. You may not rent, lease, sublicense, lend or transfer versions or copies of the Software you do not use, or Software contained on any unused media, except as part of the permanent transfer of all Software and Documentation as described above. If you acquire an upgrade or update for Software, you may use the previous version for ninety (90) days after you receive the new version in order to assist you in the transition to the new version, after which time you no longer have a license to use the previous version.

---

5. Limited Warranty. Winjay S.R.L. warrants to you that the Software will perform substantially in accordance with the Documentation for the ninety (90) day period following your receipt of the Software. To make a warranty claim, you must return the Software to the location where you obtained it along with a copy of your sales receipt within such ninety (90) day period. If the Software does not perform substantially in accordance with the Documentation, the entire and exclusive liability and remedy shall be limited to either, at Winjay S.R.L.'s option, the replacement of the Software or the refund of the license fee you paid for the Software. Winjay S.R.L. AND ITS SUPPLIERS DO NOT AND CANNOT WARRANT THE PERFORMANCE OR RESULTS YOU MAY OBTAIN BY USING THE SOFTWARE OR DOCUMENTATION. THE FOREGOING STATES THE SOLE AND EXCLUSIVE REMEDIES FOR Winjay S.R.L.'S OR ITS SUPPLIERS' BREACH OF WARRANTY. EXCEPT FOR THE FOREGOING LIMITED WARRANTY, Winjay S.R.L. AND ITS SUPPLIERS MAKE NO WARRANTIES, EXPRESS OR IMPLIED, AS TO NONINFRINGEMENT OF THIRD PARTY RIGHTS, MERCHANTABILITY, OR FITNESS FOR ANY PARTICULAR PURPOSE. Some states or jurisdictions do not allow the exclusion of implied warranties or limitations on how long an implied warranty may last, so the above limitations may not apply to you. To the extent permissible, any implied warranties are limited to ninety (90) days. This warranty gives you specific legal rights. You may have other rights which vary from state to state or jurisdiction to jurisdiction.

Should the end user experiences failure of his customized hardware key, Winjay S.R.L. sole responsibility will be the repair or replacement of the "hardware key" which should be returned to Winjay S.R.L. together with a copy of the receipt invoice received when you purchased the software. This warranty is not valid if the malfunction has raised from accident or improper use. In no event the end user may pretend a second "hardware key".

6. Limitation of Liability. IN NO EVENT WILL Winjay S.R.L. OR ITS SUPPLIERS BE LIABLE TO YOU FOR ANY CONSEQUENTIAL, INCIDENTAL OR SPECIAL DAMAGES, INCLUDING ANY LOST PROFITS OR LOST SAVINGS, EVEN IF A Winjay S.R.L. REPRESENTATIVE HAS BEEN ADVISED OF THE POSSIBILITY OF SUCH DAMAGES, OR FOR ANY CLAIM BY ANY THIRD PARTY. SOME STATES OR JURISDICTIONS DO NOT ALLOW THE EXCLUSION OR LIMITATION OF INCIDENTAL, CONSEQUENTIAL OR SPECIAL DAMAGES, SO THE ABOVE LIMITATIONS MAY NOT APPLY TO YOU.

7. Governing Law and General Provisions. This Agreement will be governed by the laws in force in Italy excluding the application of its conflicts of law rules. This Agreement will not be governed by the United Nations Convention on Contracts for the International Sale of Goods, the application of which is expressly excluded. If any part of this Agreement is found void and unenforceable, it will not affect the validity of the balance of the Agreement, which shall remain valid and enforceable according to its terms. You agree that the Software will not be shipped, transferred or exported into any country or used in any manner prohibited by the United States Export Administration Act or any other export laws, restrictions or regulations. This Agreement shall automatically terminate upon failure by you to comply with its terms. This Agreement may only be modified in writing signed by an authorized officer of Winjay S.R.L.

---

Macintosh is a trademark of Apple Computer, Inc. registered in the U.S. and other countries. Windows is either a registered trademark or a trademark of Microsoft Corporation. Any other trademark belongs to the respective owner.